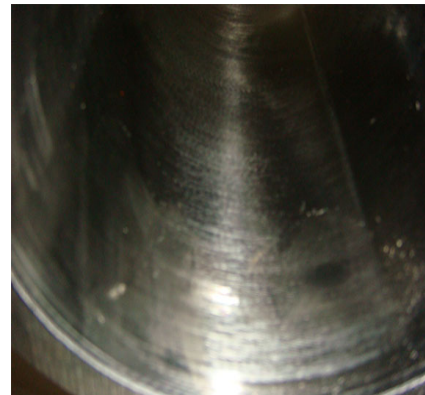
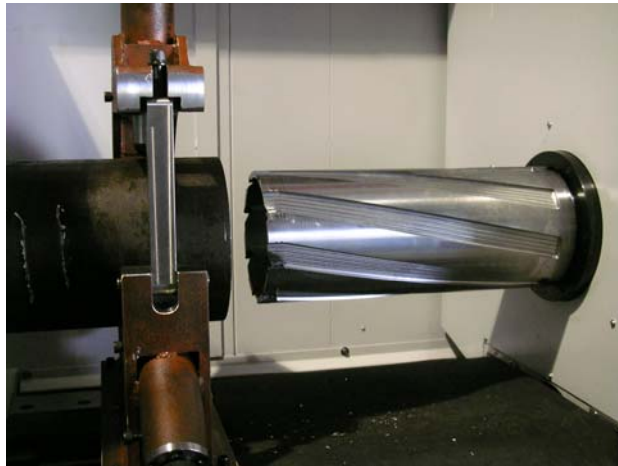


Finished Parts / 工藝樣本

Ref No.:

Date: Oct 14 2010

Workpiece	工件名稱	Core Remaining Test
		硬材質留芯測試
Material	材質	SCM4 紅十字
Machine	使用機型	TPA-1200
Drilling dia.	鑽孔孔徑	Ø240mm
Drilling depth	鑽孔深度	500mm
Machining time	加工時間	10min



Key Points / 加工特點說明

The illustration shows the practical cutting test for large diameter core remaining on TAP-1200. Wei Hong TPA1200 is designed to activate tooling rotation instead of conventional parts rotation in very low speed. The tool rotation allows reasonable high cutting feed and free from vibration and run-out, this better trepanning technology reserve higher surface finishing and better tooling longevity.

The cutting efficiency and improved productivity by 30-40% increased, compared to conventional turning solution or parts rotation system with great vibration concern.

圖例為 TPA-1200 新機完成時測試實景，本機之設計為採用刀具旋轉工件固定的模式，切削狀態相當平穩，並無工件旋轉模式常出現的抖動或偏擺狀況發生，轉刀模式孔內之精準度高，光潔度表現較好，且刀具意外損耗較少

刀具在合理線速度的切削狀態，刀片壽命較一般工件旋轉的模式更為延長（無抖動及不合理切削），加工速度與產能較快約 30~40%。